



FIELD GUIDE

to the Flora and Fauna of Lake Jackson Aquatic Preserve

Tallahassee, Florida



Florida Department of Environmental Protection
Office of Resilience and Coastal Protection



Lake Jackson is internationally known for its unique hydrology and trophy largemouth bass along with outstanding habitat for a diversity of species. This guide will introduce you to the fish, birds, amphibians, reptiles, mammals and plants of Lake Jackson Aquatic Preserve.

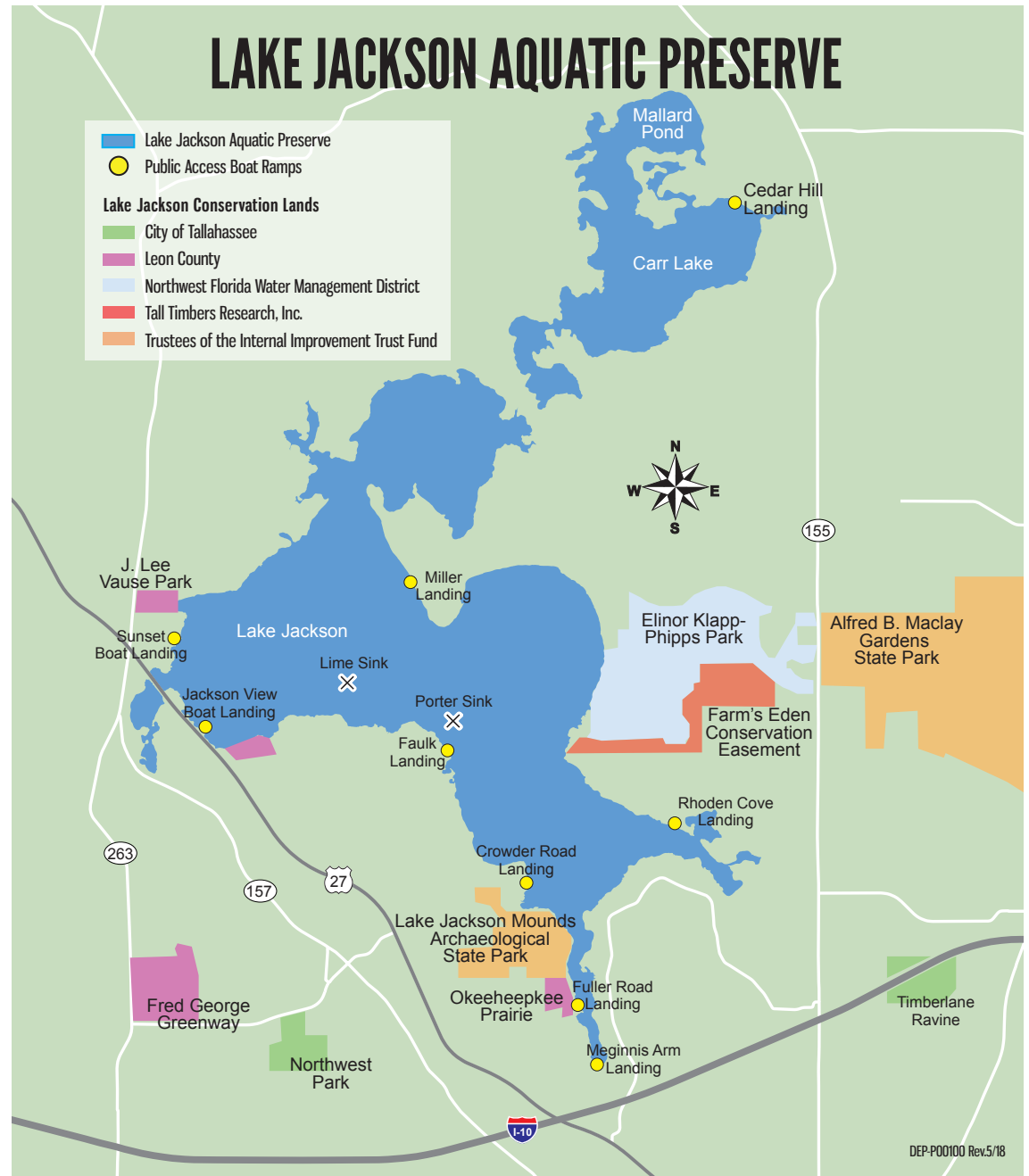
The aquatic preserve is located within the northern boundaries of the Tallahassee Red Hills region and includes not only Lake Jackson but also Carr Lake and Mallard Pond.

Because of its widely varying water levels, Lake Jackson is home to a diversity of upland, wetland and aquatic habitats and species. Typically, the lake is a shallow-water body that has an average depth of 6 feet except for two major sinkholes – Porter Hole Sink and Lime Sink – that have a depth of more than 25 feet. The lake was formed through the dissolution of limestone over time, causing the collapse of the overlaying sediment and forming the lake basin. Bottom leakage, sinkholes, long-term drought and a lack of heavy, localized rain events can create conditions that contribute to low lake levels and dramatic draining over time.

Table of Contents

- 1..... Freshwater Fish
- 2..... Fall and Winter Birds
- 3..... Spring and Summer Birds
- 4..... Amphibians and Reptiles
- 5..... Mammals
- 6..... Riparian Plants
- 7..... Aquatic and Emergent Plants

To contribute your observations, find Lake Jackson on:



The lake interior is best explored by paddlecraft and boats, while the public landings and viewing points. Outboard motorboats, mud boats and air boats can be used, depending on lake level. There are nine public boat landings that provide access to Lake Jackson Aquatic Preserve. Kiosks at each access point provide additional information and maps for your exploration. How many wildlife and plant species will you see on your next visit?

Freshwater Fish of Lake Jackson Aquatic Preserve



Juvenile



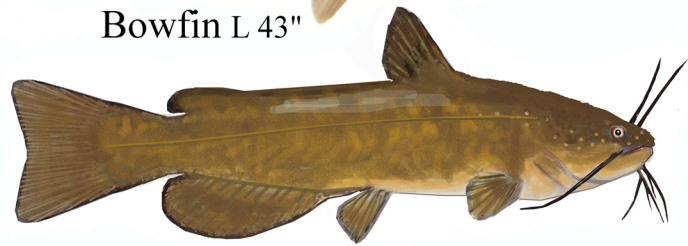
Bowfin L 43"



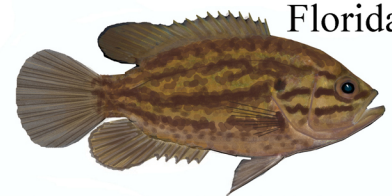
Black Crappie L 19"



Florida Gar L 52"



Yellow Bullhead L 19"



Mud Sunfish L 8.25"



Warmouth L 12"



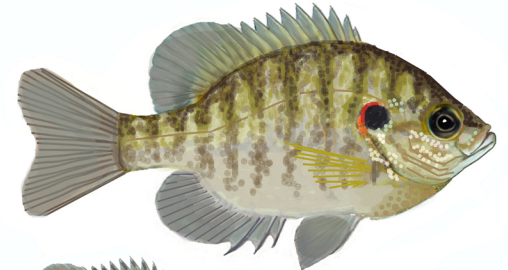
Brown Bullhead L 21"



Flier L 7.5"



Grass Carp L 31"



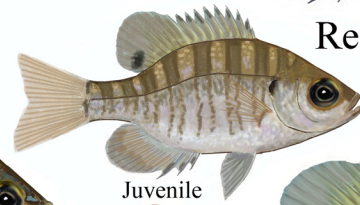
Redear Sunfish L 10"



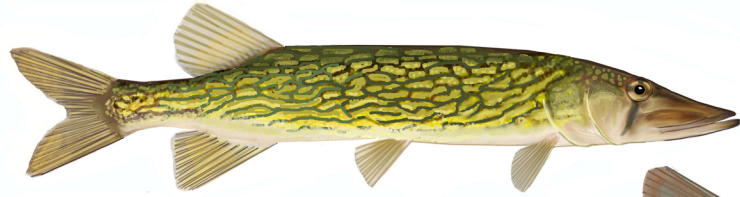
Channel Catfish L 50"



Redbreast Sunfish L 9.5"



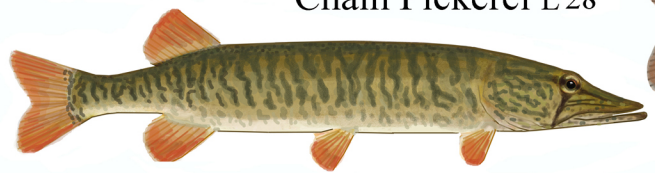
Juvenile



Chain Pickerel L 28"



Bluegill L 19"



Redfin Pickerel L 15"



Spotted Sunfish L 8"



Juvenile



Juvenile



Largemouth Bass L 28"

Illustrations not to scale
Illustrations by John Tobe, Ph.D.

Freshwater Fish of Lake Jackson Aquatic Preserve



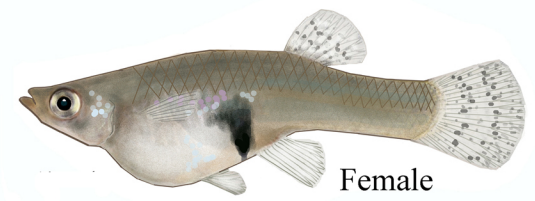
Tadpole Madtom L 5"



Golden Shiner L 12.5"



Golden Silverside L 5"



Female



Male

Eastern Mosquitofish L 2.5"



Juvenile



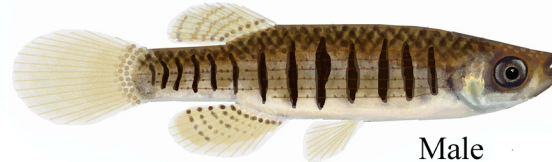
Female



Female



Lake Chubsucker L 16"



Male

Lined Topminnow L 3"



Male

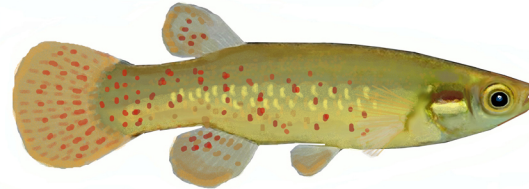
Least Killifish L 1.5"



Bluespotted Sunfish L 3.75"



Pirate Perch L 5.5"



Golden Topminnow L 3"



Male
breeding

Taillight Shiner L 3"



Threadfin Shad L 9"



Female

Everglades
Pygmy
Sunfish L 1.25"



Swamp Darter L 2.25"



Male

Illustrations not to scale
Illustrations by John David Tobe, Ph.D.

Fall and Winter Birds Lake Jackson Aquatic Preserve

Illustrations not to scale

Barred Owl L 21"



Eastern Screech-Owl L 8.5"



Ring-billed Gull L 18"



Tree Swallow L 5.75"



Northern Harrier L 18" ♂



Forster's Tern L 13" ♀



American White Pelican L 62"



Belted Kingfisher L 13" ♂



Belted Kingfisher L 13" ♀



Bald Eagle L 31"



American Coot L 16" ♀



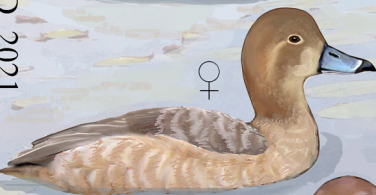
Bufflehead L 14" ♂



Ring-necked Duck L 17" ♀



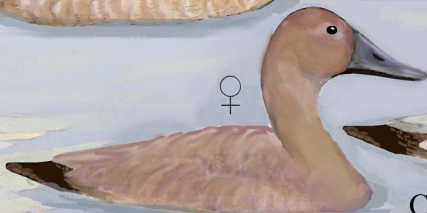
Redhead Duck L 19" ♀



Lesser Scaup L 16" ♀



Canvasback L 22" ♀



Least Sandpiper L 6"



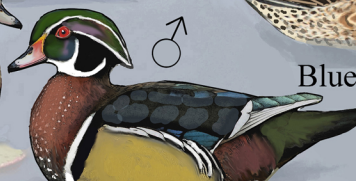
Wilson's Snipe L 11"



Spotted Sandpiper L 7.5"



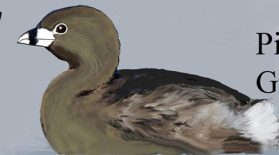
Wood Duck L 18" ♂



Blue-winged Teal L 16" ♀



Pied-billed Grebe L 13"



Illustrations by John David Tobe, Ph.D. 2021

Fall and Winter Birds Lake Jackson Aquatic Preserve

Orange-crowned
Warbler L 5"



Palm
Warbler L 5" winter



spring

Yellow-rumped
Warbler L 5.5" winter



spring

winter

Song
Sparrow
L 6.25"



Chipping
Sparrow
L 5.5"



White-throated
Sparrow L 6.75"



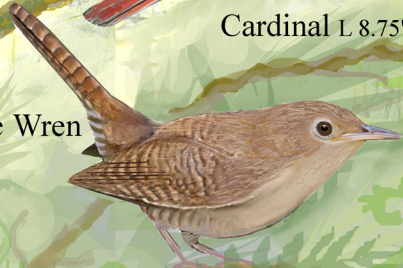
Swamp
Sparrow
L 5.75 in



Northern
Cardinal L 8.75"



House Wren
L 4.75"



Eastern
Phoebe L 7"



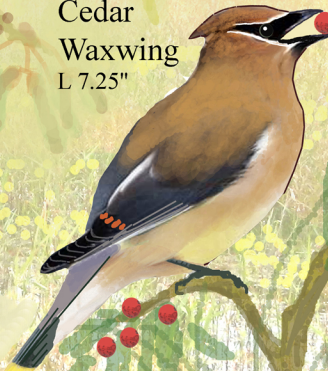
Ruby-crowned
Kinglet L 4.25"



Blue-gray
Gnatchatcher L 4.5"



Cedar
Waxwing
L 7.25"



Brown
Thrasher
L 11.5"



Mourning Dove L 12"



spring



American
Goldfinch L 5" winter



American
Robin L 10"



Northern
Flicker L 12"



Yellow-bellied
Sapsucker L 8.5"



Carolina
Wren L 5.5"



Gray Catbird L 8.5"



Common
Yellowthroat L 5"



Spring & Summer Birds Lake Jackson Aquatic Preserve

Turkey Vulture L 26"



Red-tailed Hawk L 19"



Anhinga L 37"



Osprey L 23"



Fish Crow L 15"



Black Vulture L 25"



Swallow-tailed Kite L 22"



Common Nighthawk L 9.5"



Mississippi Kite L 14"



Roseate Spoonbill L 32"



American Kestrel L 9"



Wood Stork L 40"



Laughing Gull L 17"



Glossy Ibis L 26"



Great Blue Heron L 46"



Red-shouldered Hawk L 17"



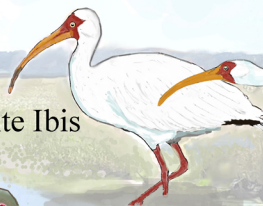
Tricolor Heron L 26"



Least Tern L 9"



White Ibis L 25"



Little Blue Heron L 24"



Double-crested Cormorant L 33"



Roseate Spoonbill L 32"



Great Egret L 39"



Great Egret L 39"



Cattle Egret L 20"



Limpkin L 26"



Anhinga L 37"



Wood Stork L 40"



Glossy Ibis L 26"



Snowy Egret L 24"



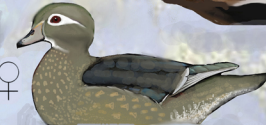
Common Gallinule L 14"



Purple Gallinule L 13"



Wood Duck L 18"



Black-bellied Whistling-Duck L 21"



Green Heron L 18"

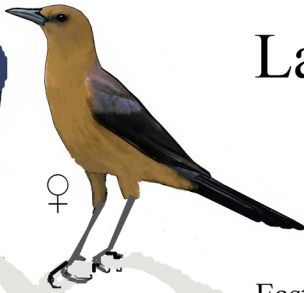


Illustrations not to scale

Illustrations by John David Tobe, Ph.D.

Spring & Summer Birds Lake Jackson Aquatic Preserve

Boat-tailed Grackle
L 16"



Northern Mockingbird
L 10"



Chimney Swift
L 5"



Purple Martin L 8"



Eastern Bluebird L 7"



Orchard Oriole L 7.25"



Eastern Kingbird L 8.5"



Barn Swallow L 6.75"



Blue Jay L 11"

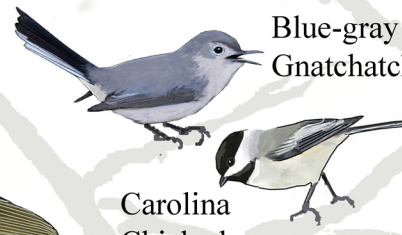
American Crow L 17"



White-eyed Vireo L 5"



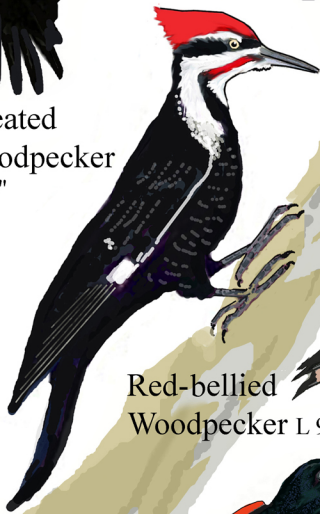
Blue-gray Gnatcatcher L 4.5"



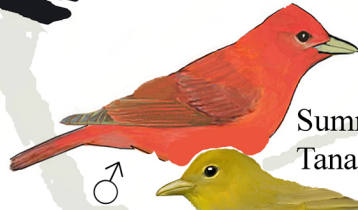
Acadian Flycatcher L 5.5"



Pileated Woodpecker L 16"



Summer Tanager L 7"



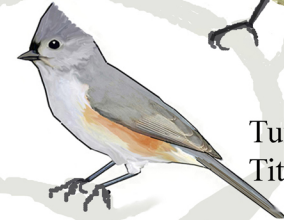
Common Ground Dove L 6.5"



Downy Woodpecker L 6.75"



Tufted Titmouse L 6.5"



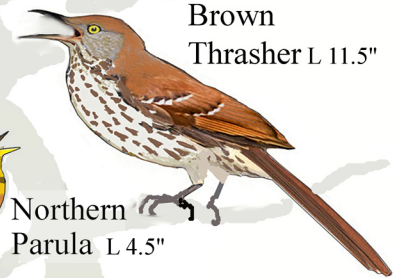
Red-bellied Woodpecker L 9"



Mourning Dove L 12"



Brown Thrasher L 11.5"



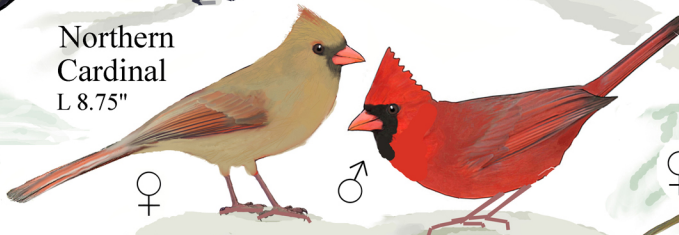
Great Crested Flycatcher L 8.75"



Common Grackle L 12.5"



Northern Cardinal L 8.75"



Common Yellowthroat L 5"



Eastern Towhee L 8.5"



Ruby-throated Hummingbird L 3.75"



Red-winged Blackbird L 8.75"



Illustrations by John David Tobe, Ph.D. 2021

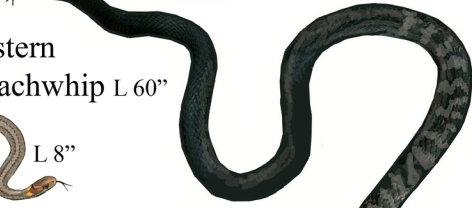
Illustrations not to scale

Reptiles of Lake Jackson Aquatic Preserve



Black Racer L 60"

Eastern Coachwhip L 60"



Scarletsnake L 30"



Gartersnake L 26"



Rough L 24"
Greensnake



Cottonmouth L 48"



Red-Bellied Snake L 8"

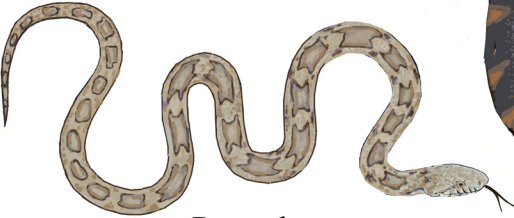
Banded Watersnake L 42"



Mudsnake L 24"

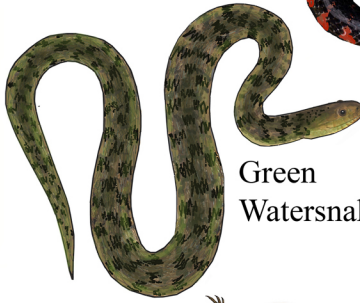


Eastern Glass Lizard L 42"



Gray Ratsnake L 72"

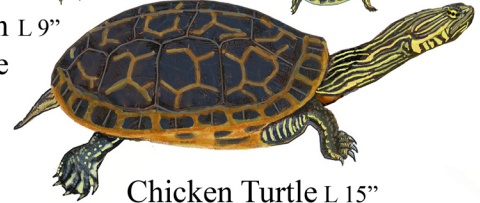
Green Watersnake L 55"



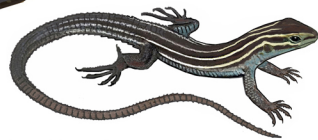
Southeastern Five-lined Skink L 9"



Green Anole L 9"



Chicken Turtle L 15"



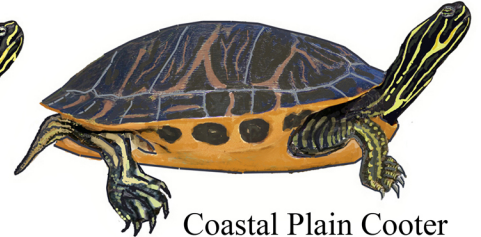
Six-lined Racerrunner L 10"



Little Brown Skink L 5"



Yellow-bellied Slider L 10"



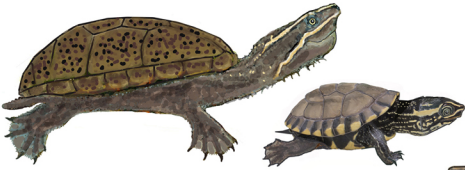
Coastal Plain Cooter L 15"



Eastern Box Turtle L 6.5"



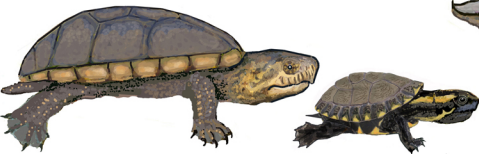
Florida Softshell L 14"



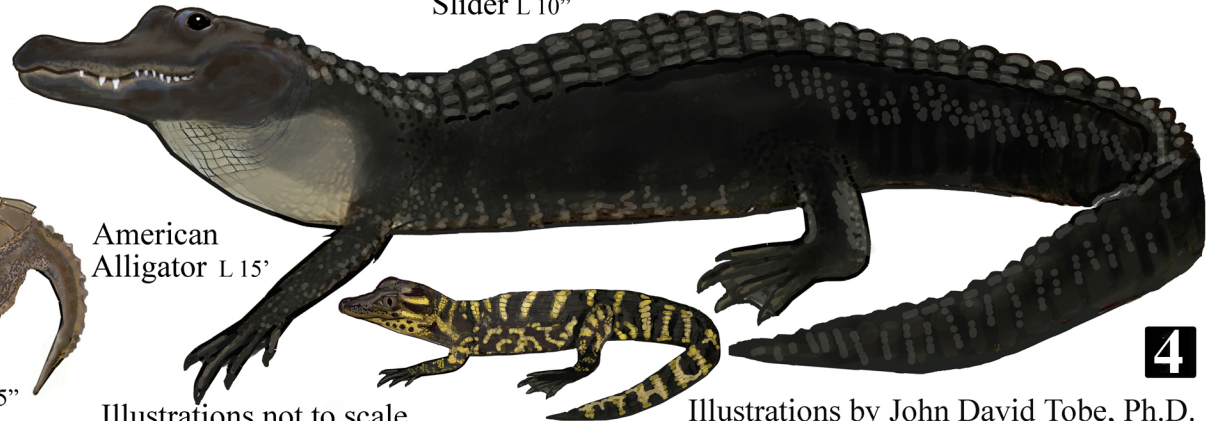
Eastern Musk Turtle L 4"



Common Snapping Turtle L 15"



Southeastern Mud Turtle L 4.5"

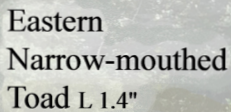
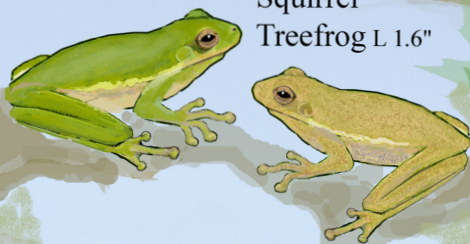
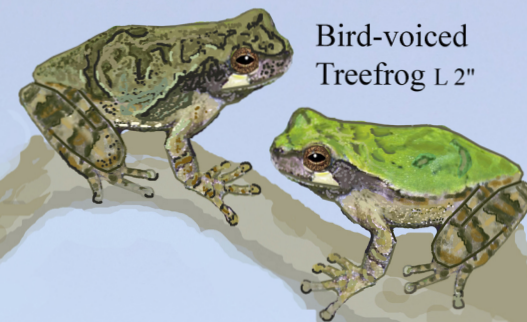


American Alligator L 15"

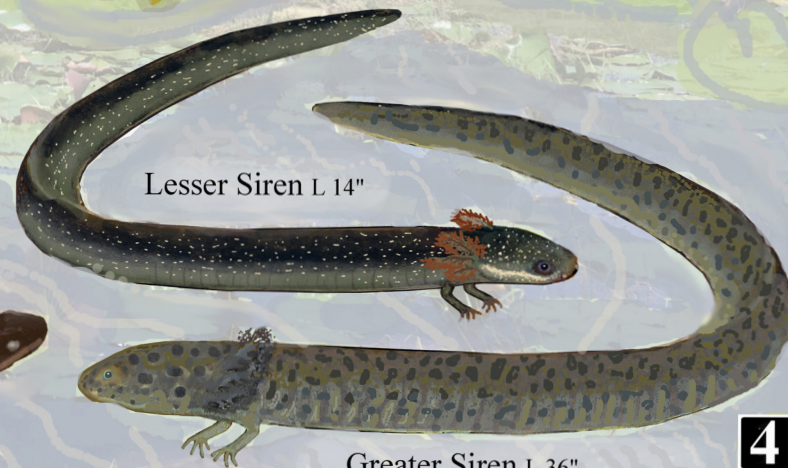
Illustrations not to scale

Illustrations by John David Tobe, Ph.D.

Amphibians of Lake Jackson Aquatic Preserve



Illustrations not to scale



Illustrations by John David Tobe, Ph.D.

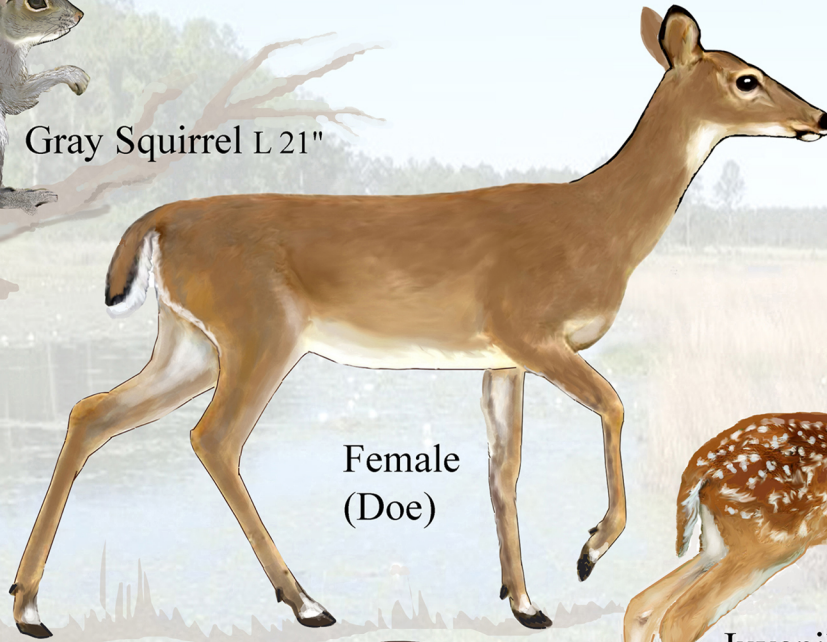
Mammals of Lake Jackson Aquatic Preserve



Gray Squirrel L 21"



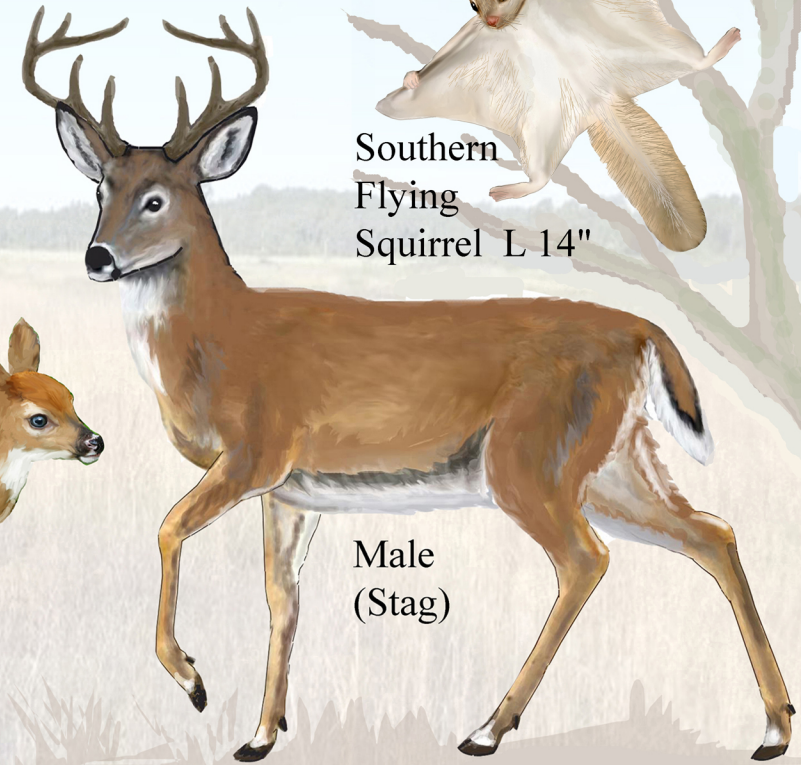
Southern Flying Squirrel L 14"



Female (Doe)



Juvenile (Fawn)



Male (Stag)

White-tailed Deer L 8'



Southern Flying Squirrel L 14"



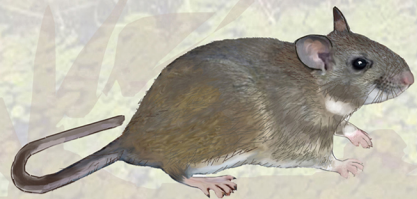
River Otter L 40"



Oldfield Mouse L 5"



Marsh Rice Rat L 5"



Eastern Woodrat L 15"



Cotton Rat L 6.5"



Marsh Rabbit L 17"



Beaver L 4'



Cottontail Rabbit

Illustrations not to scale

Illustrations by John David Tobe, Ph.D.

Mammals of Lake Jackson Aquatic Preserve



Striped Skunk L 30"

Spotted Skunk L 12"



Northern Yellow Bat L 2.8" wingspan 16"

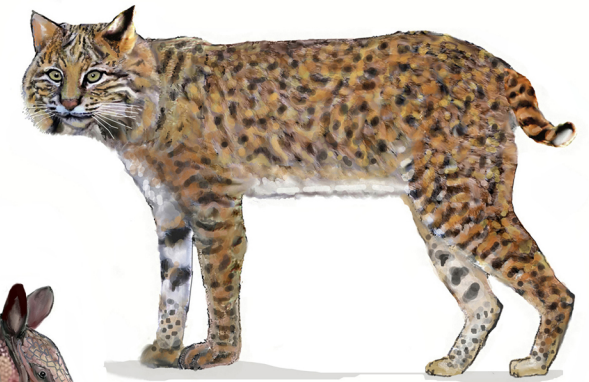
Evening Bat L 2.5" wingspan 11"



Brazilian Free-tailed Bat L 2.9" wingspan 13"



Southeastern Myotis L 2.1" wingspan 11"



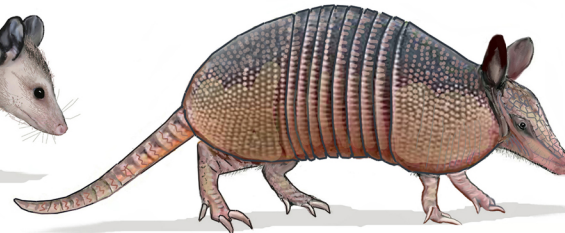
Bobcat L 2.5'



Raccoon L 28"



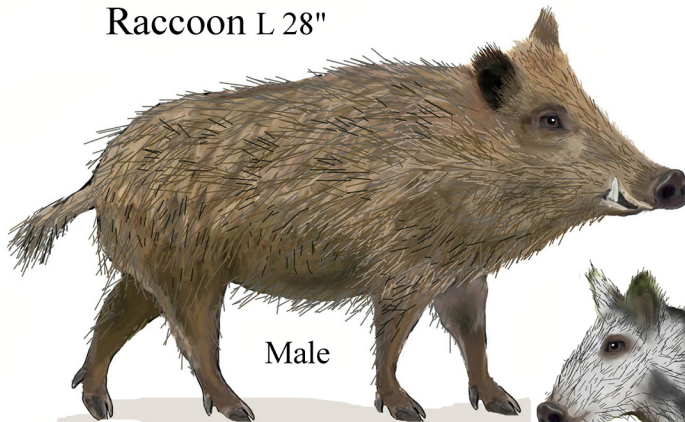
Virginia Opossum L 35"



Nine-banded Armadillo L 40" (Invasive)



Gray Fox L 35"



Male

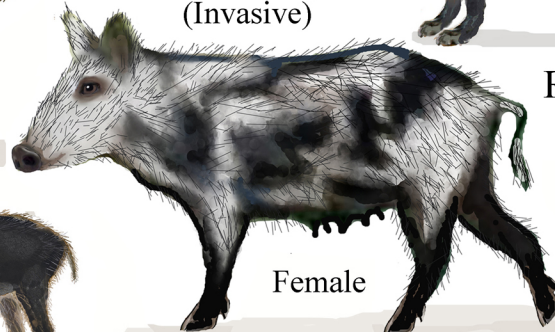
Feral Hog L 6' (Invasive)



Red Fox L 35"



Juveniles



Female

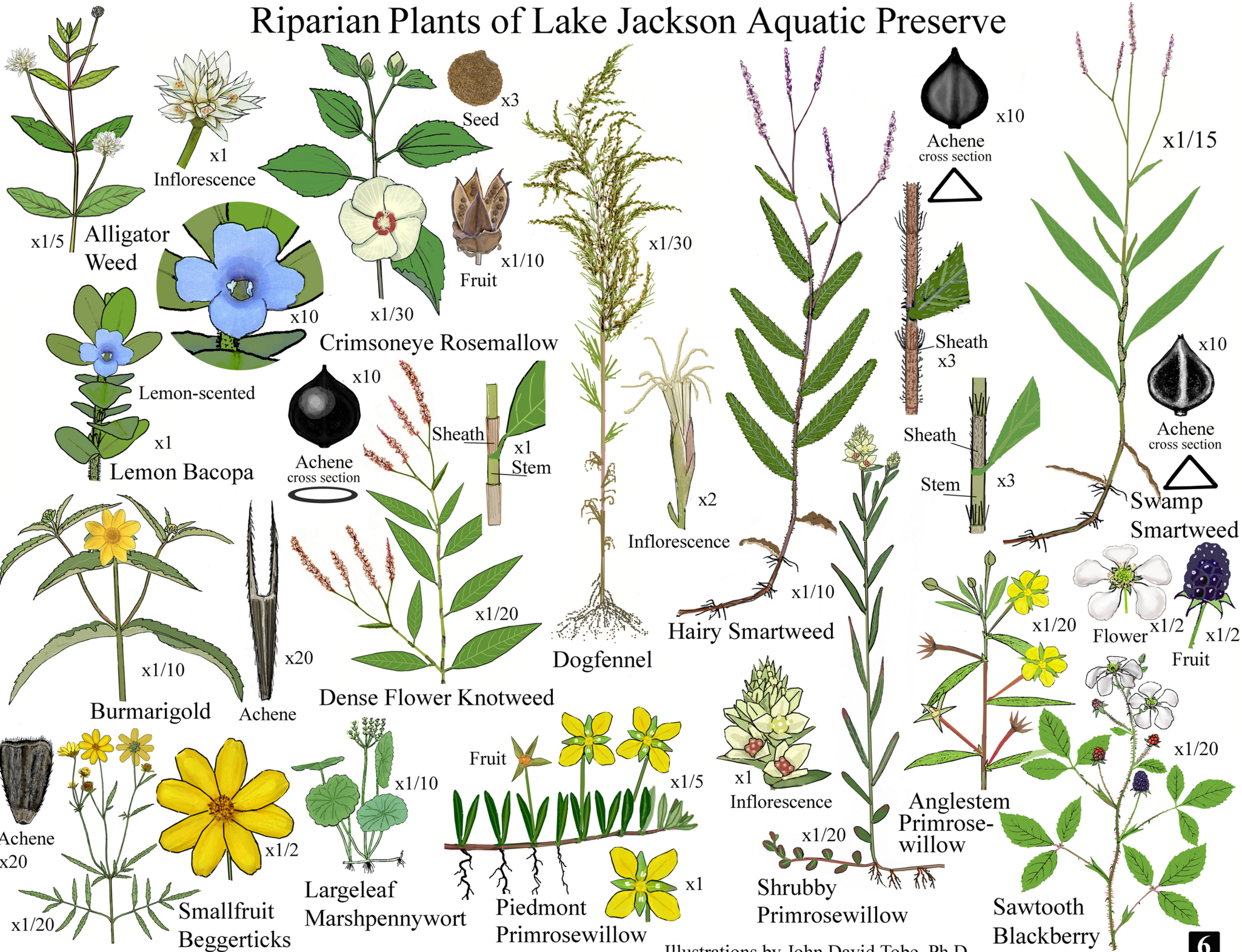


Coyote L 5.5'

Illustrations not to scale

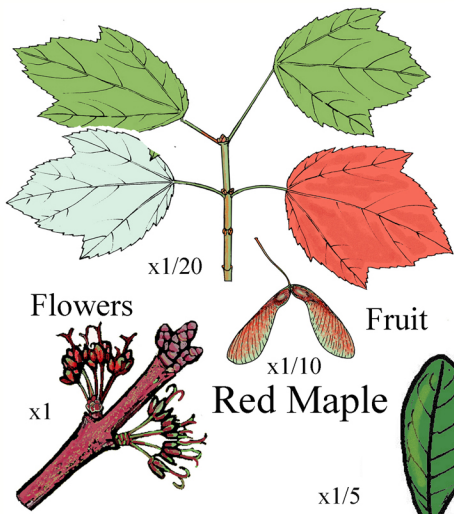
Illustrations by John David Tobe, Ph.D.

Riparian Plants of Lake Jackson Aquatic Preserve

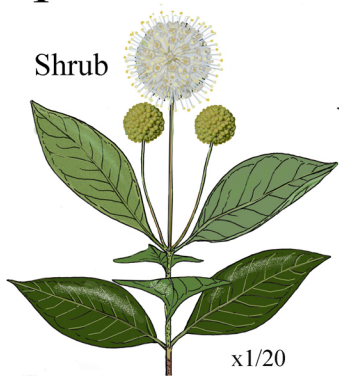


Illustrations by John David Tobe, Ph.D.

Riparian Plants of Lake Jackson Aquatic Preserve



Red Maple



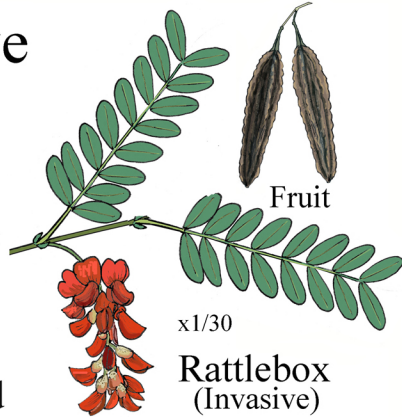
Buttonbush



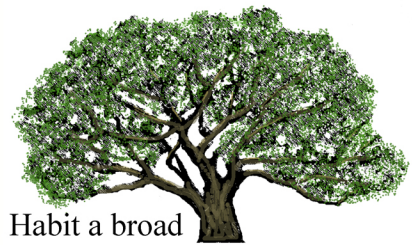
Sweetgum



Bigpod Sesbania



Rattlebox (Invasive)



Habit a broad spreading tree
Live Oak



Acorn



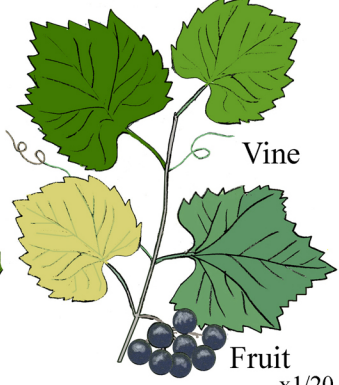
Carolina Willow



Popcorn Tree or Tallowtree (Invasive)



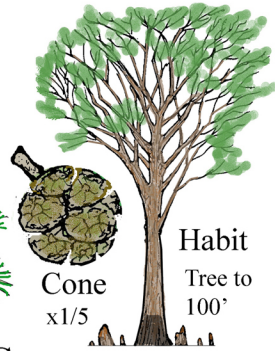
Dahoon Holly



Muscadine



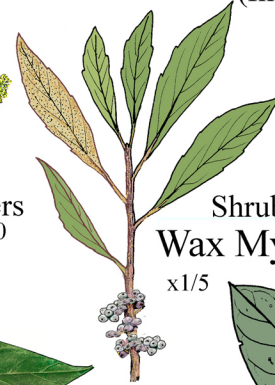
Bald Cypress



Habit Tree to 100'
Cone



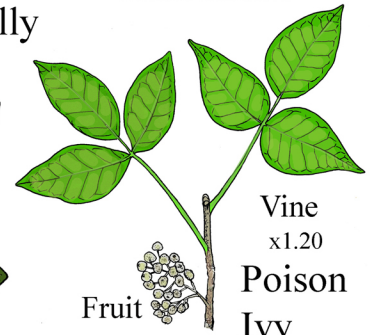
Black Willow



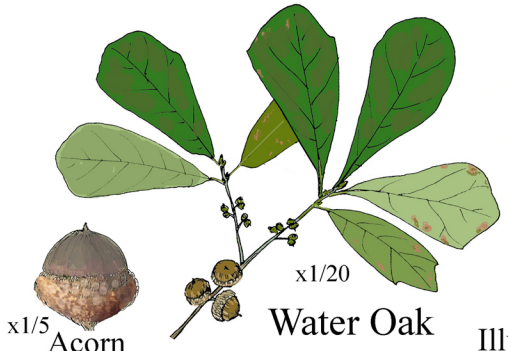
Shrub Wax Myrtle



Sweetbay



Vine x1.20
Poison Ivy



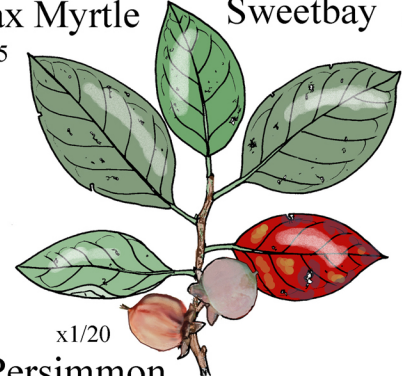
Water Oak



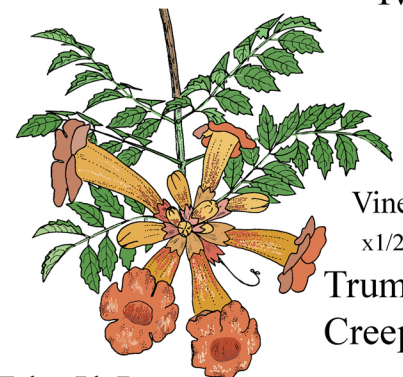
Sugar Hackberry



Fruit x1/10



Persimmon

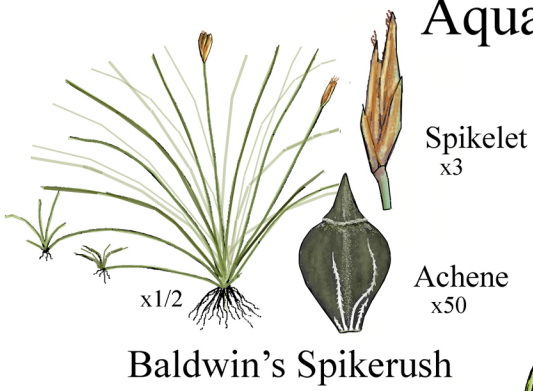


Vine x1/20
Trumpet Creeper

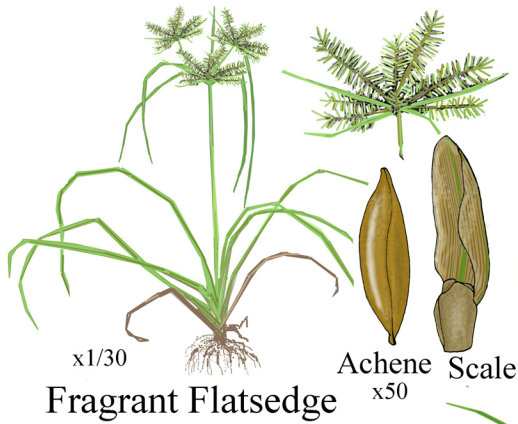
Illustrations to the scale indicated

Illustrations by John David Tobe, Ph.D.

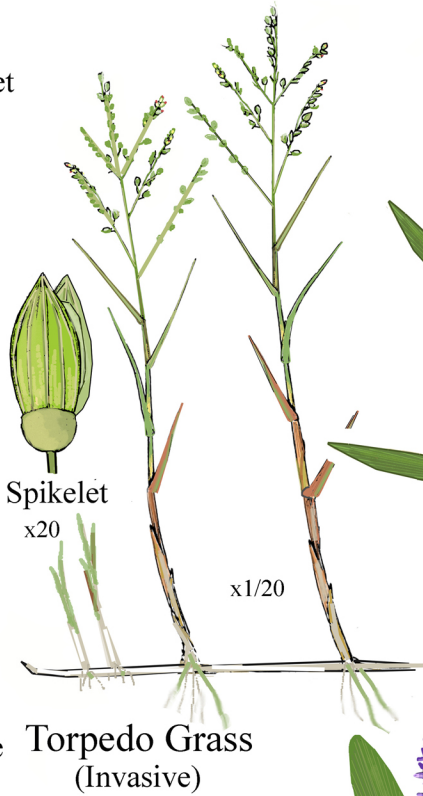
Aquatic and Emergent Plants of Lake Jackson Aquatic Preserve



Baldwin's Spikerush



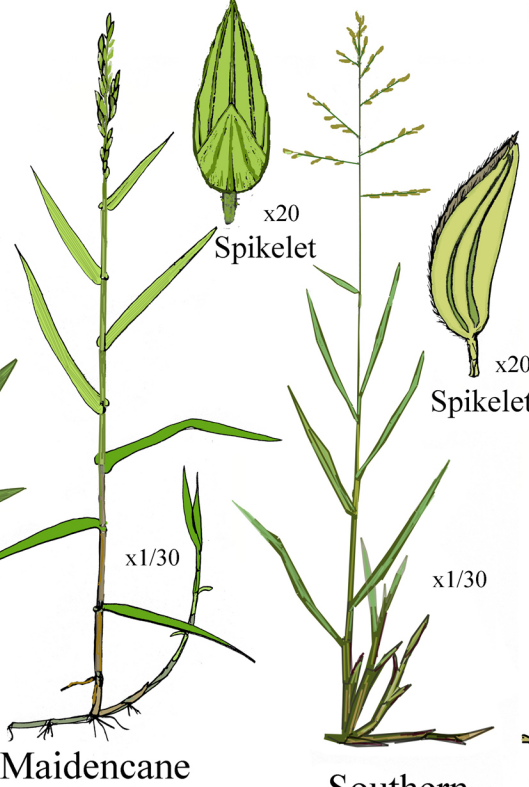
Fragrant Flatsedge



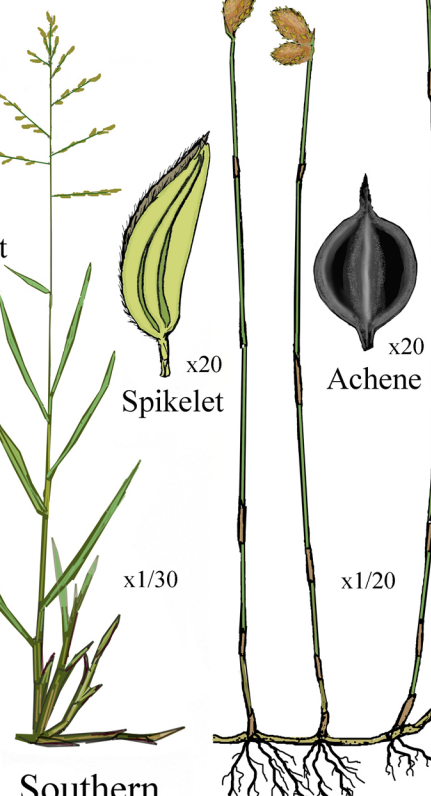
Torpedo Grass
(Invasive)



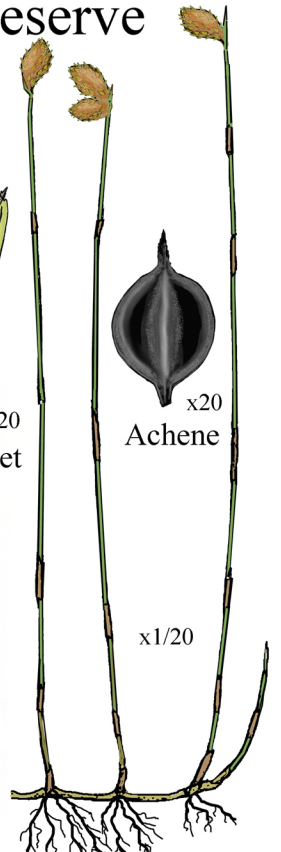
American
Cupscale



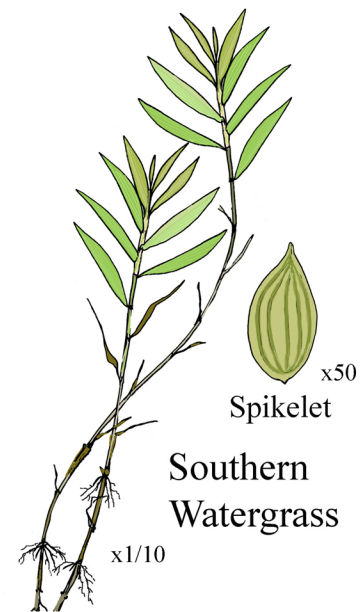
Maidencane



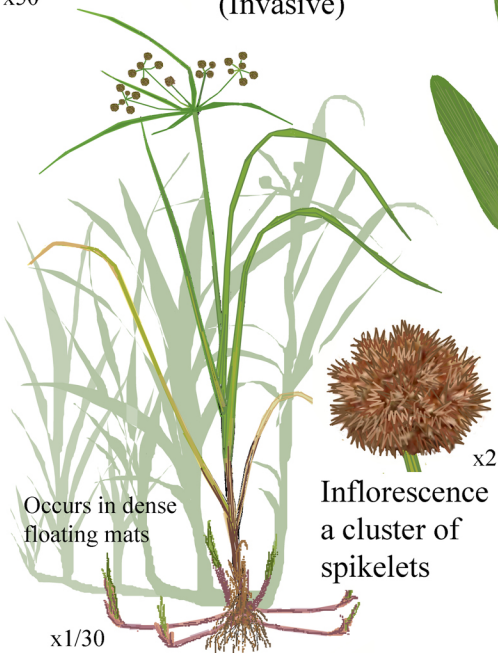
Southern
Cutgrass



Southern
Umbrellasedge



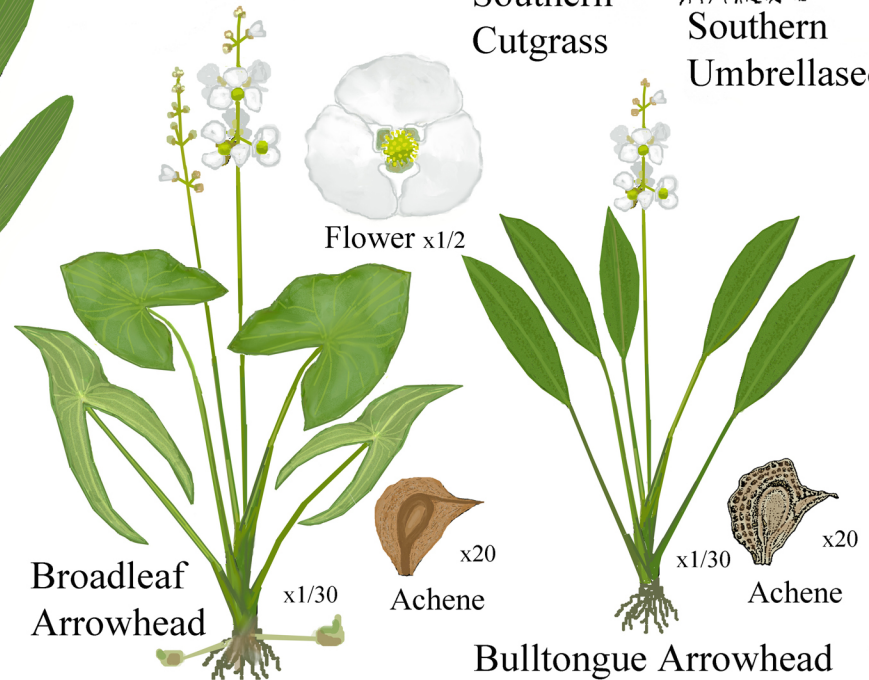
Southern
Watergrass



Cuban Bulrush
(Invasive)



Pickerelweed



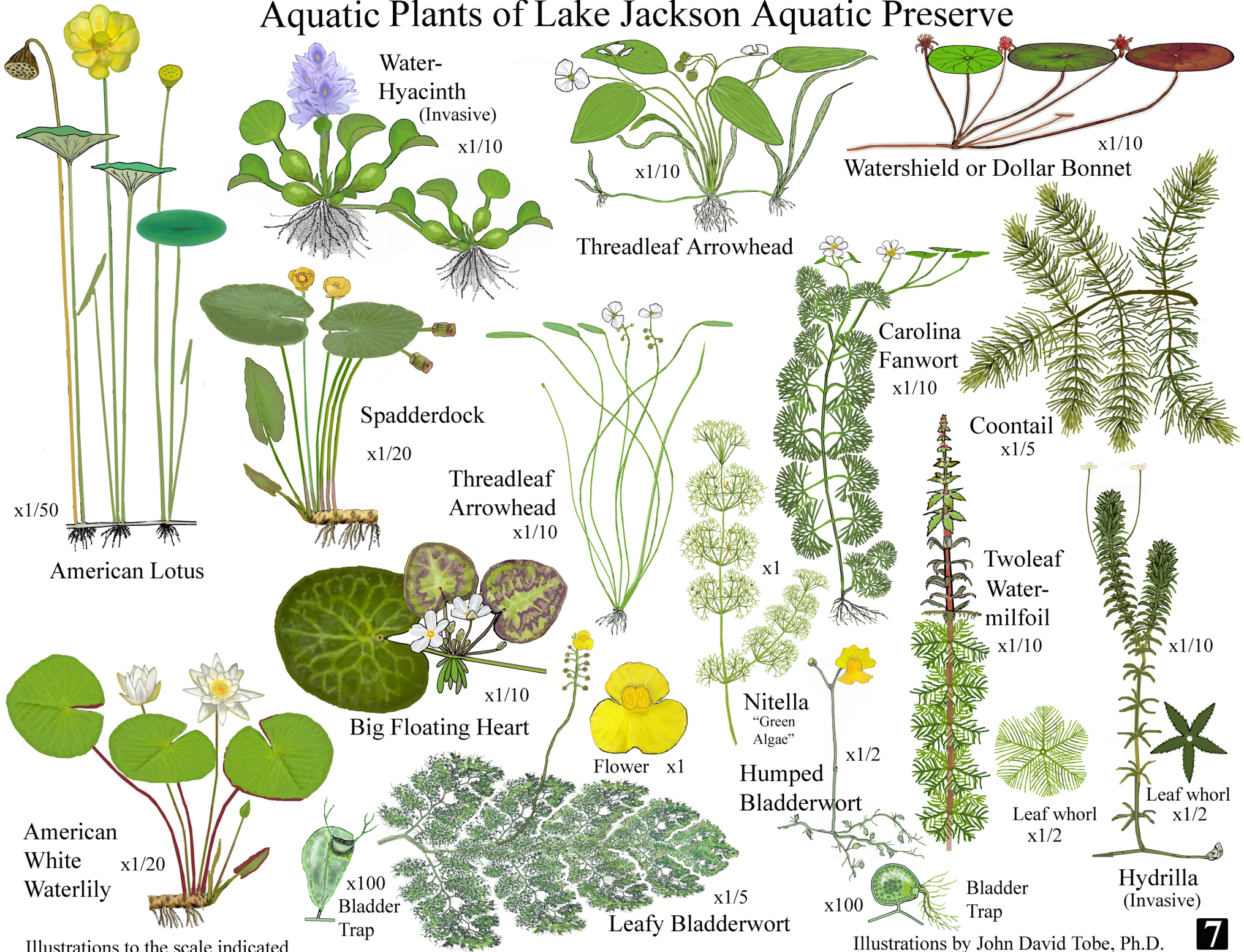
Broadleaf
Arrowhead

Bulltongue Arrowhead

Illustrations to the scale indicated

Illustrations by John David Tobe, Ph.D.

Aquatic Plants of Lake Jackson Aquatic Preserve



Illustrations to the scale indicated

Illustrations by John David Tobe, Ph.D.